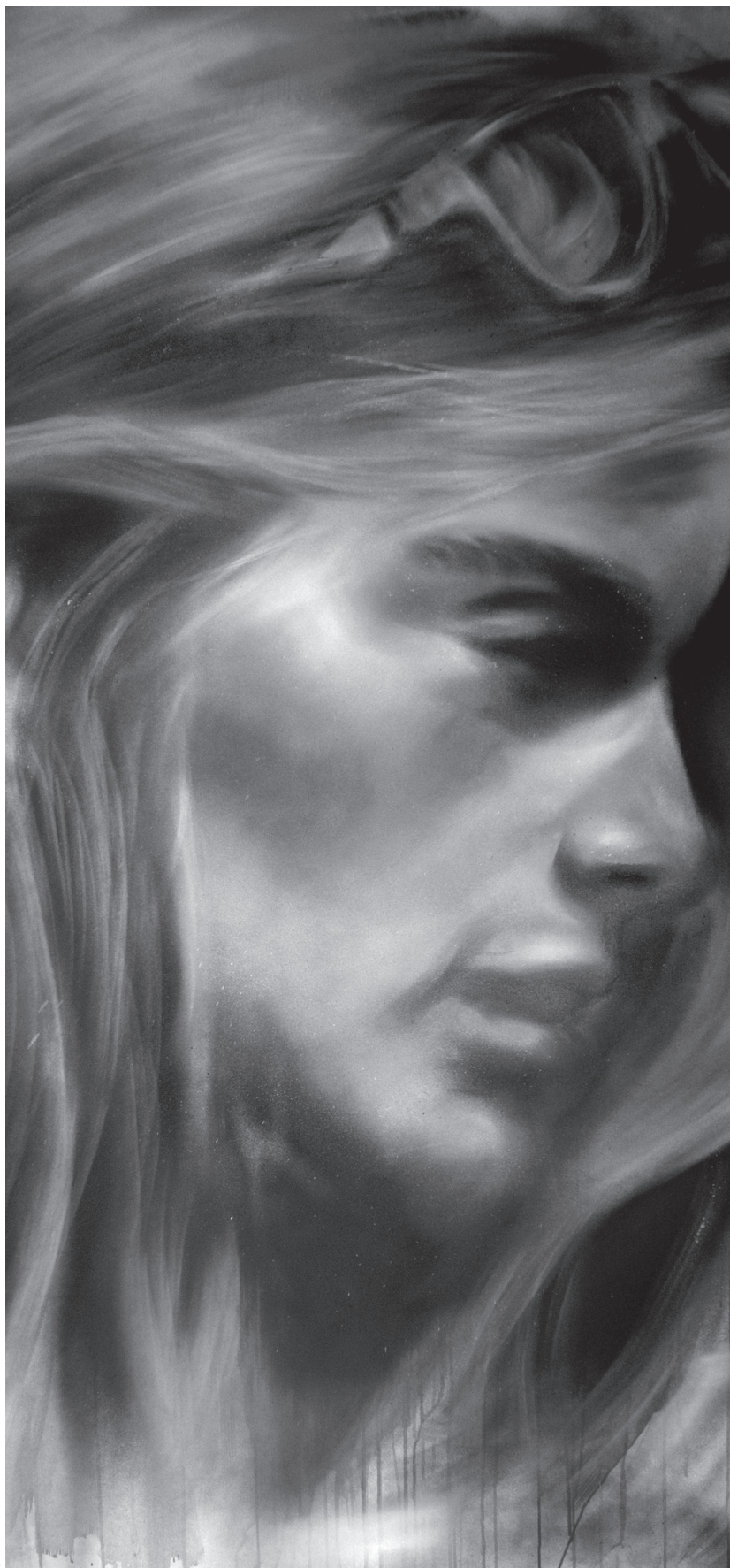
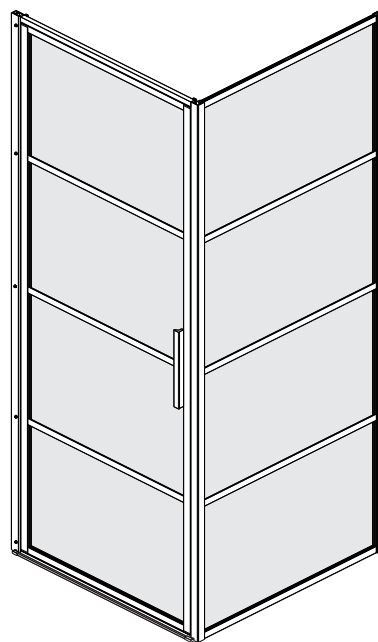
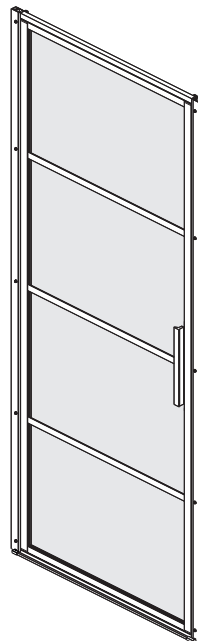


# sealskin



KB19  
KB20  
KB01



# SOHO



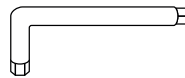
## Included



MUUR PLUG  
CHEVILLE  
WALL ANCHORS

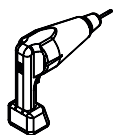


SCHROEVEN  
VIS  
SCREWS

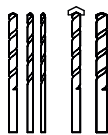


INBUSSLEUTEL  
CLÉALLEN  
ALLEN KEY

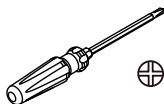
## Additional tools



BOOR  
PERCEUSE  
DRILL



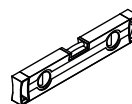
BOOR BITS: 3.0MM, 6.0MM  
FORETS: 3.0MM, 6.0MM  
DRILL BITS: 3.0MM, 6.0MM  
DRILL BITS: 4.0MM, 6.0MM



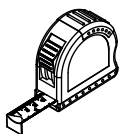
SCHROEVENDRAAIER  
TOURNEVIS  
SCREW DRIVER



SILICONENKIT  
SILICONE  
SILICONE



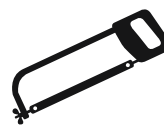
WATERPAS  
NIVEAU  
BUBBLE LEVEL



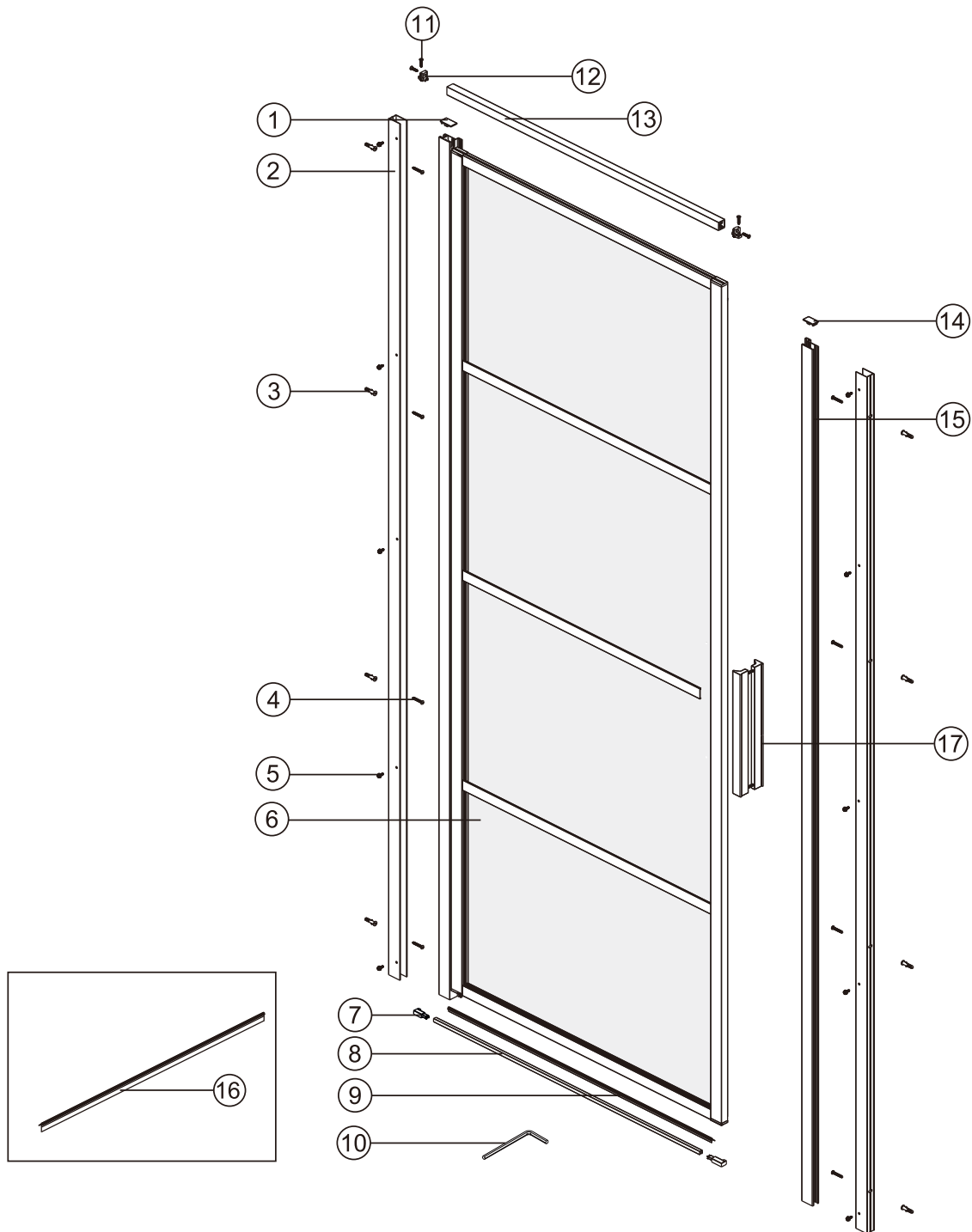
MEETLINT  
RUBAN À MESURER  
MEASURING TAPE



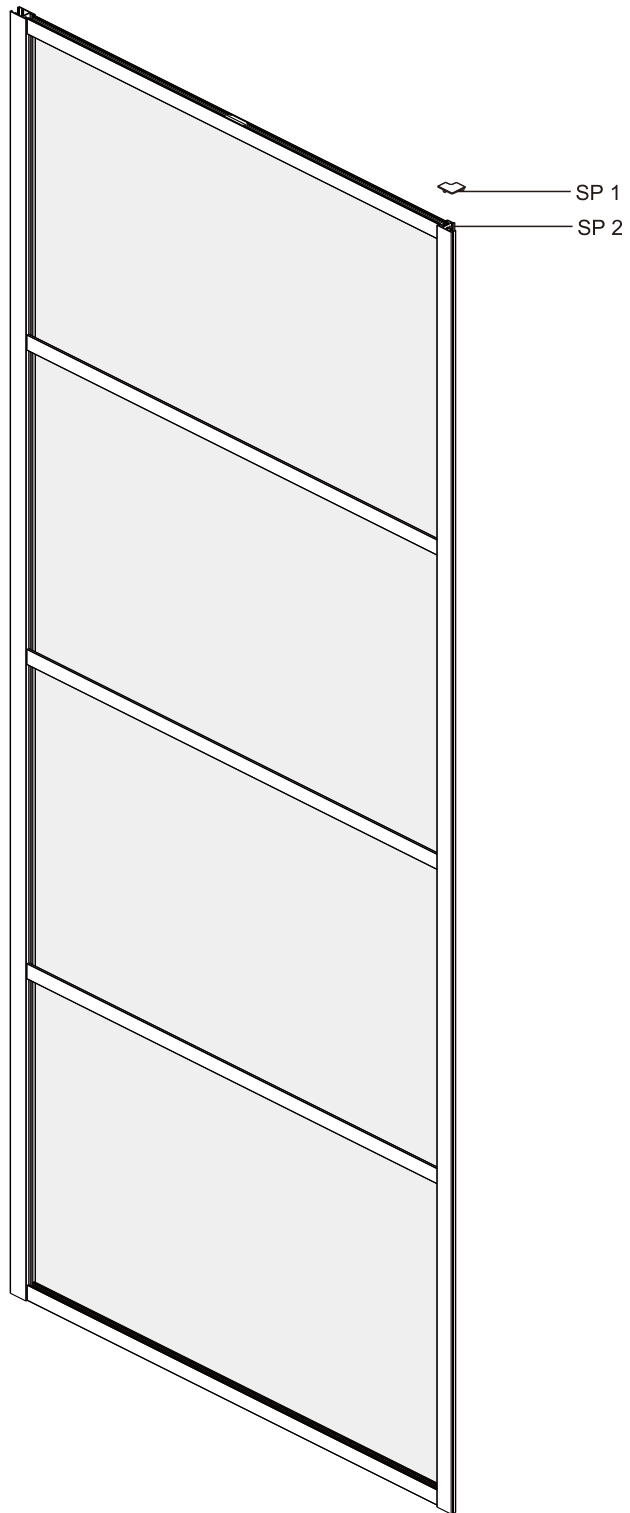
POTLOOD  
CRAYON  
PENCIL



IJZER ZAAG  
SCIE À FER  
METAL SAW



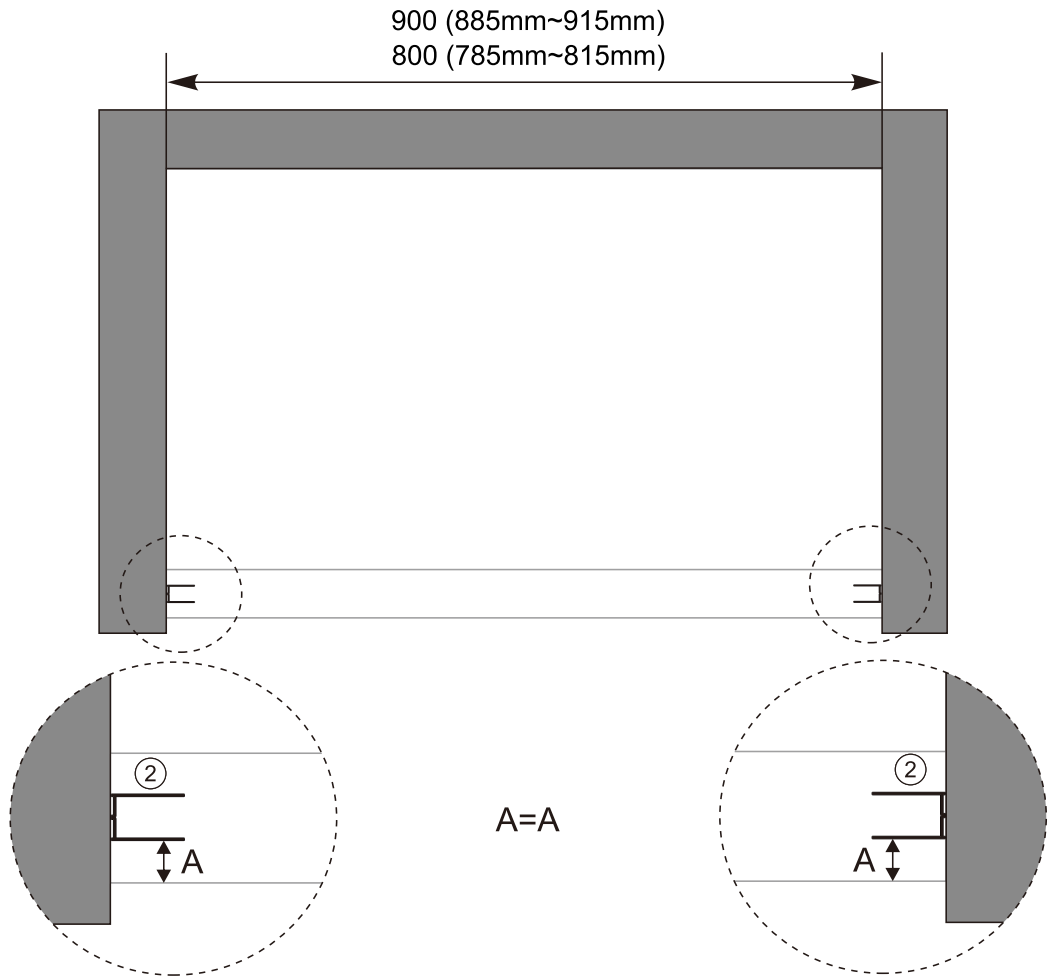
NO	Qty	Description	NO	Qty	Description
1	1	Wall profile top cover	10	1	Allen key
2	2	Wall profile	11	4	Cross head countersunk screw ST3.5X20
3	8	Wall anchor	12	2	Bracket for Horizontal bar
4	8	Cross head screw ST4X30	13	1	Horizontal bar
5	10	Phillip head hexagon screw ST4.8X12	14	1	Wall profile top cover
6	1	Door panel	15	1	Magnet profile
7	2	Threshold part L/R	16	1	Bottom gasket B
8	1	Back splash	17	1	Handle
9	1	Bottom gasket A			



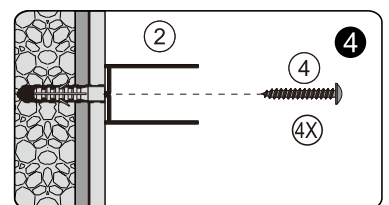
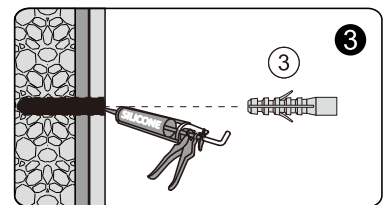
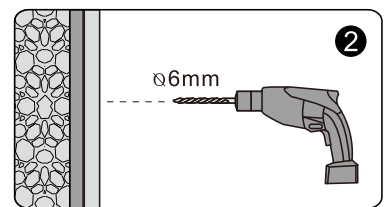
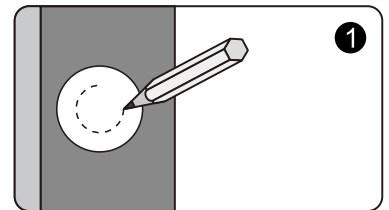
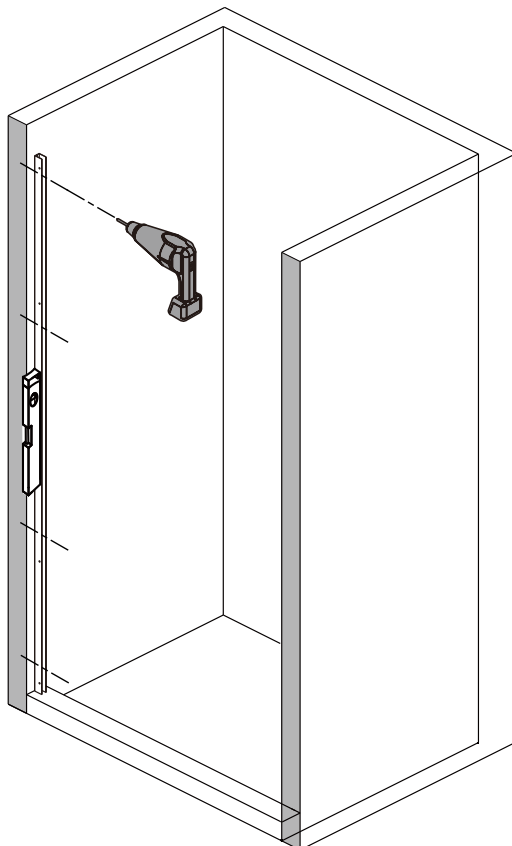
NO	Qty	Description
SP 1	1	Corner profile top cover
SP 2	1	Return panel



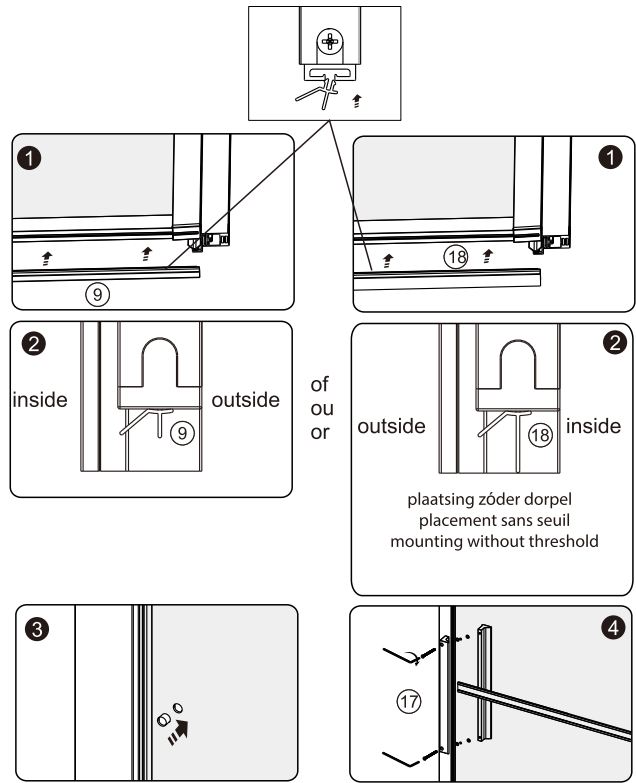
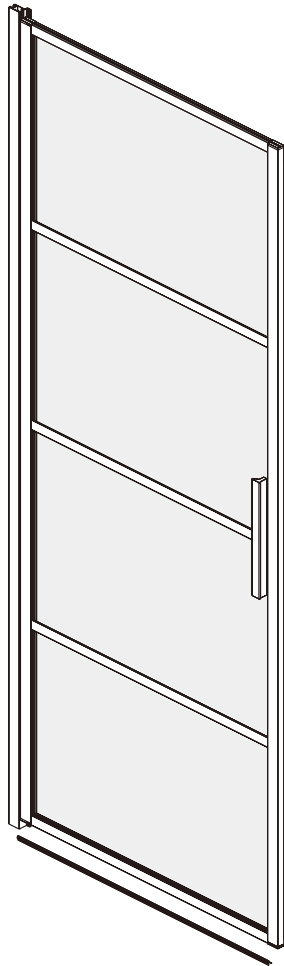
**A** 01



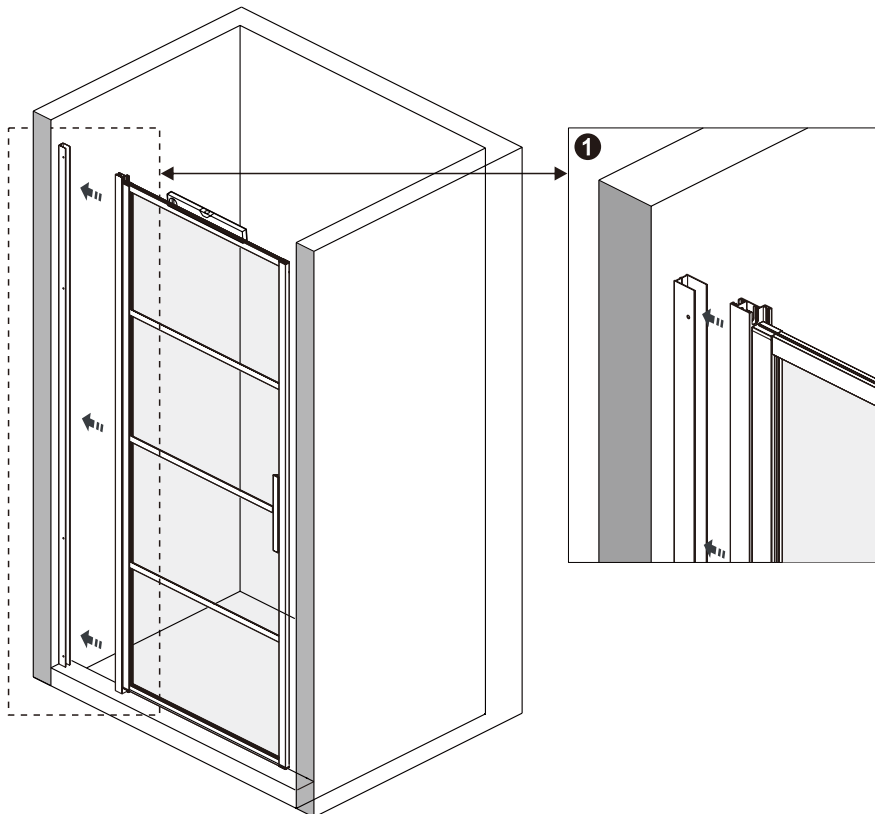
**A** 02



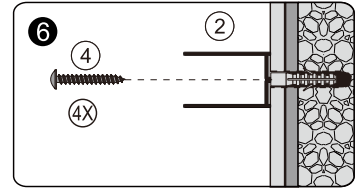
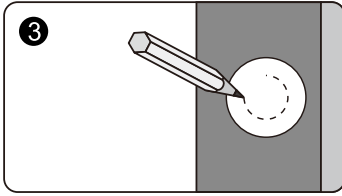
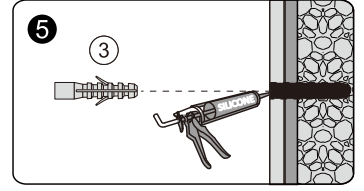
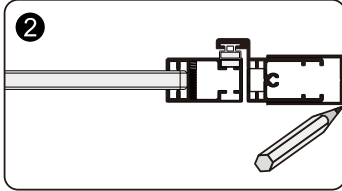
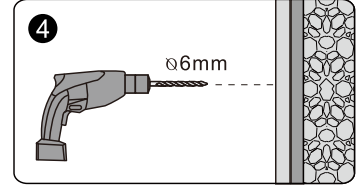
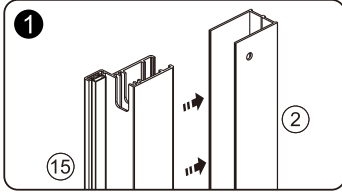
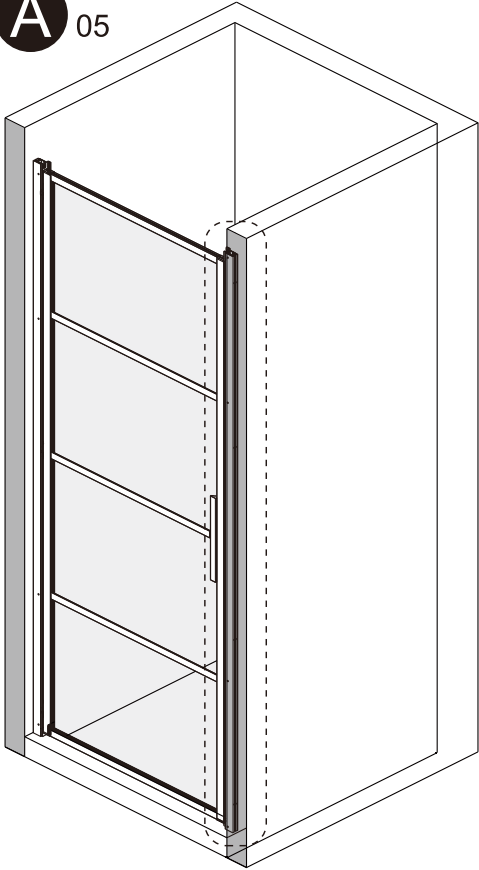
**A** 03



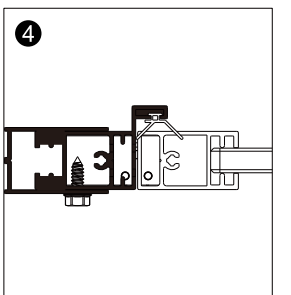
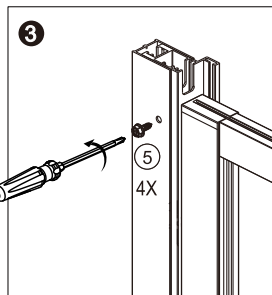
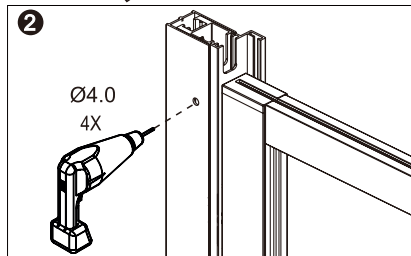
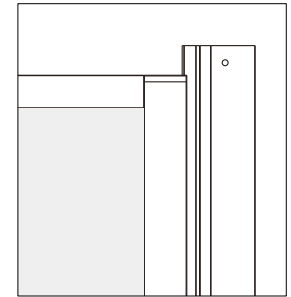
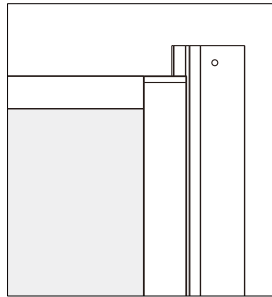
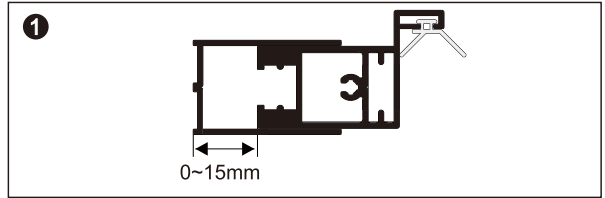
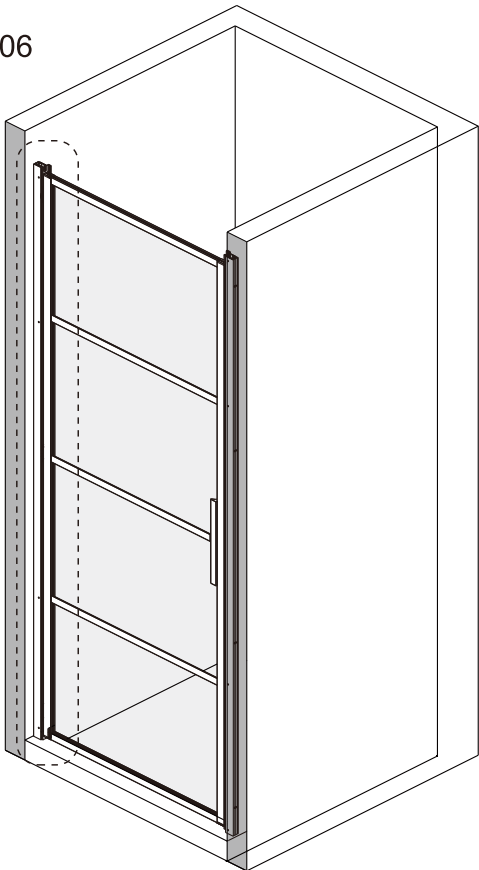
**A** 04



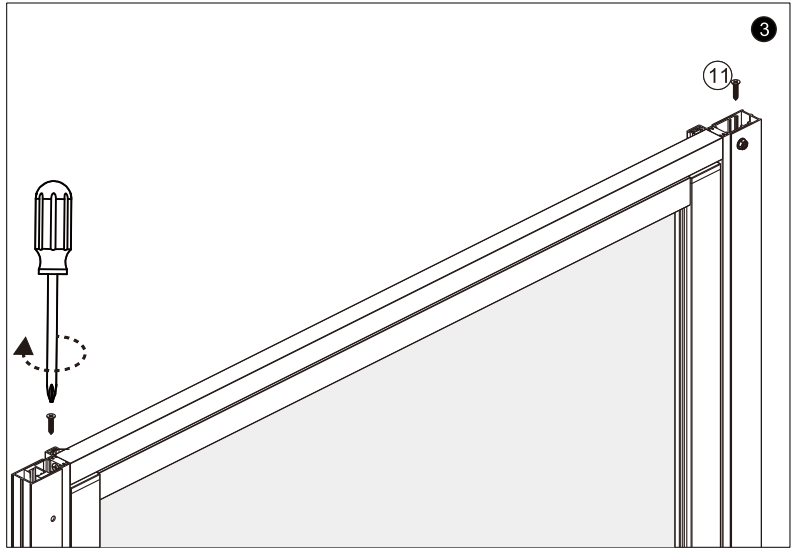
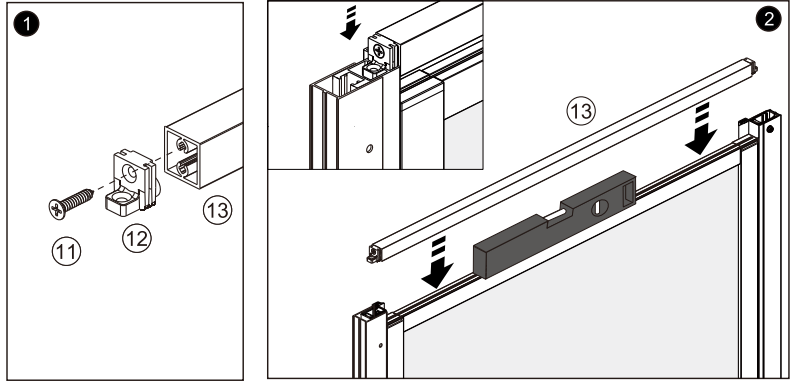
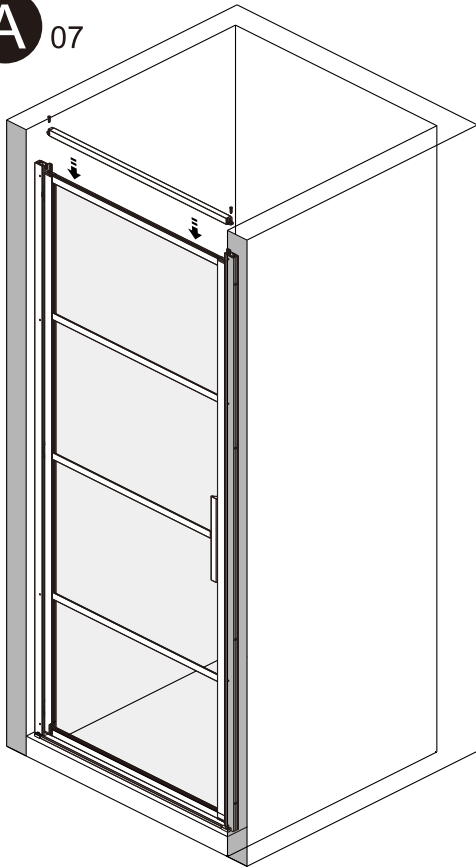
**A** 05



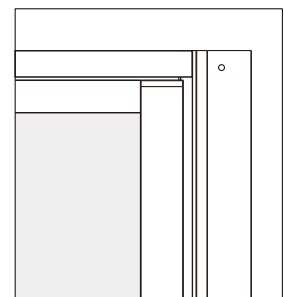
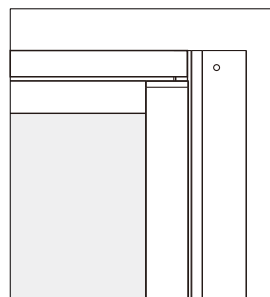
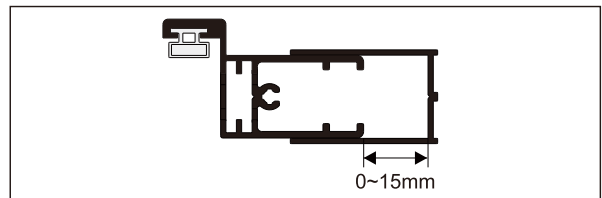
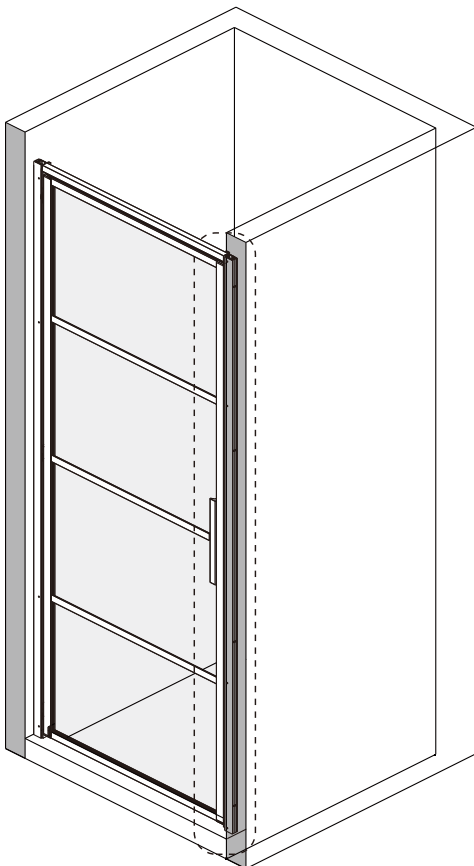
**A** 06



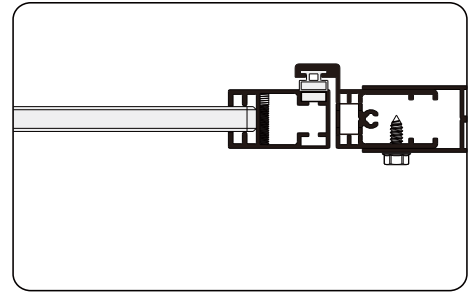
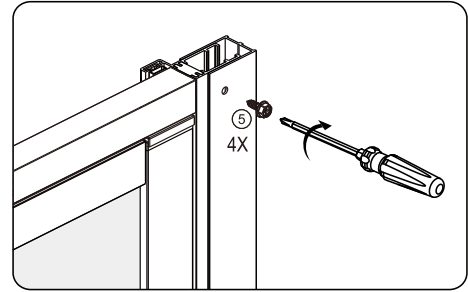
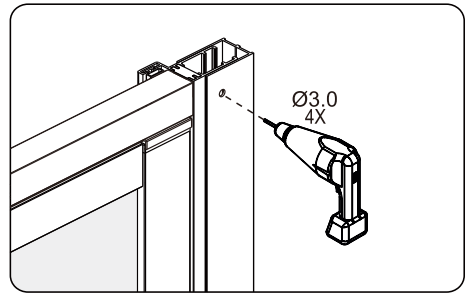
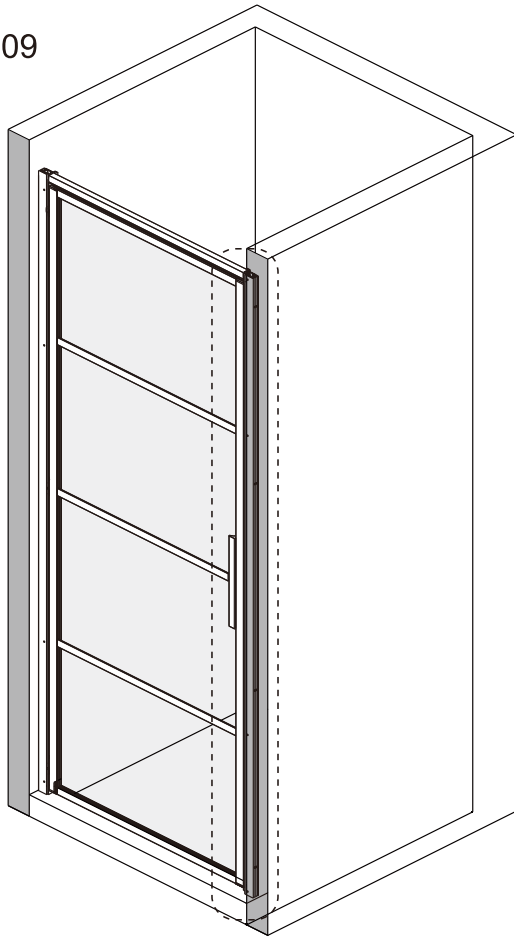
**A** 07



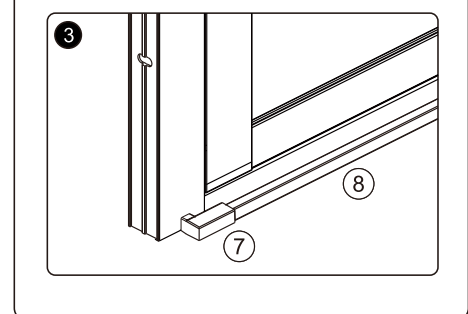
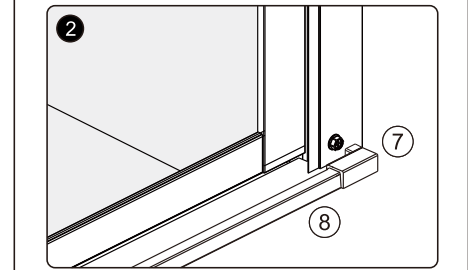
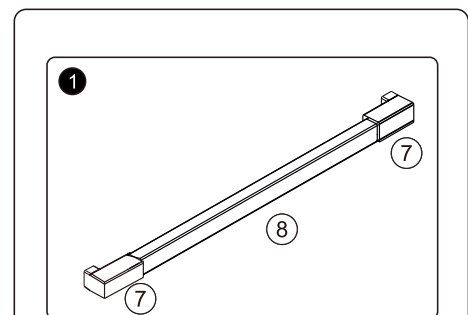
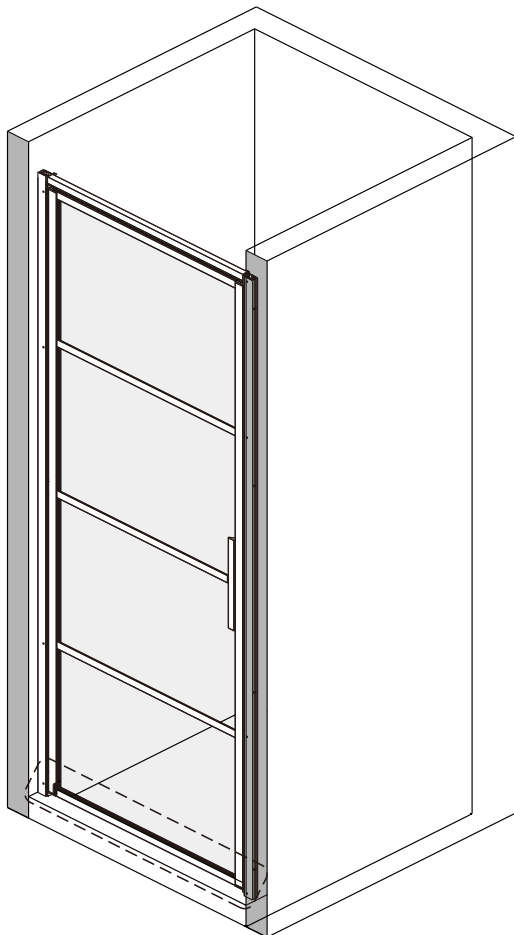
**A** 08



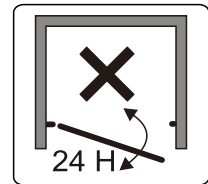
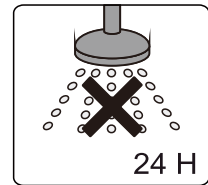
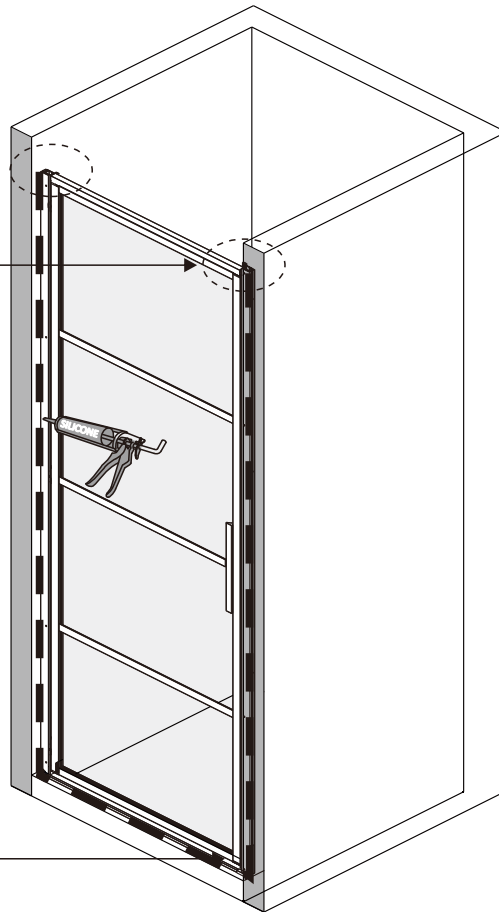
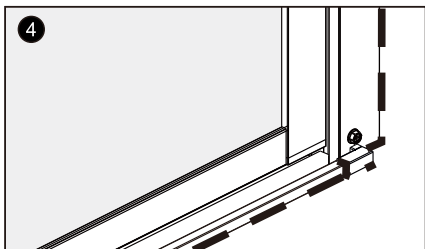
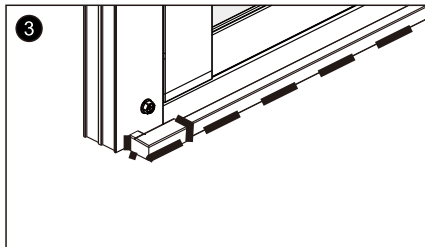
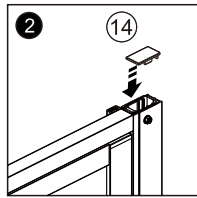
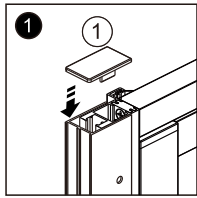
**A** 09



**A** 10

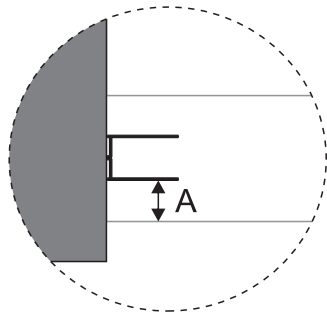
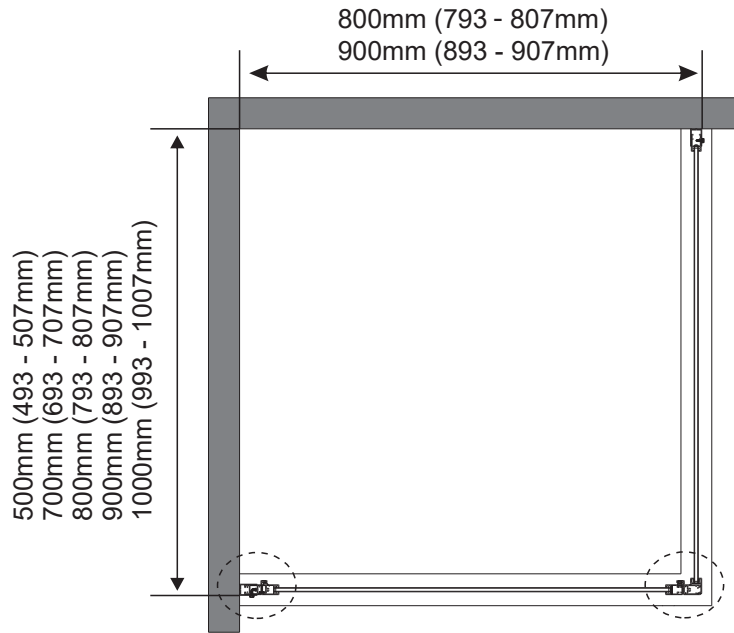


**A** 11

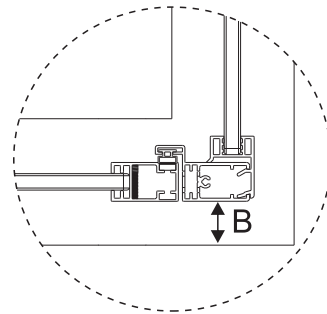




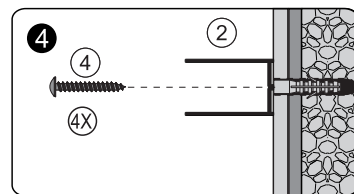
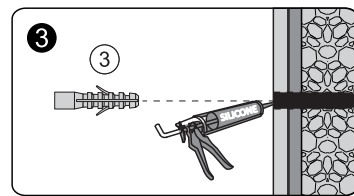
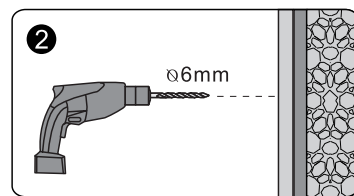
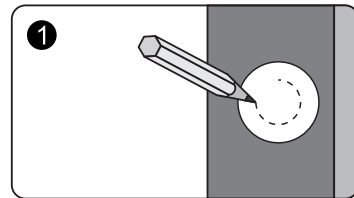
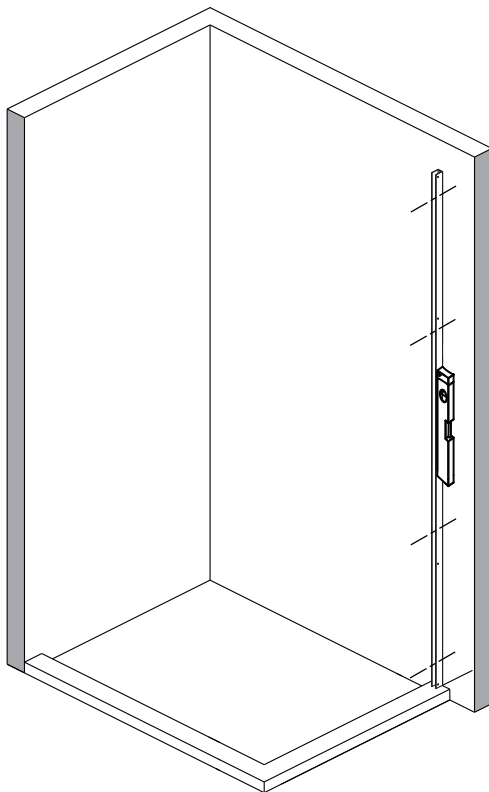
**B** 01



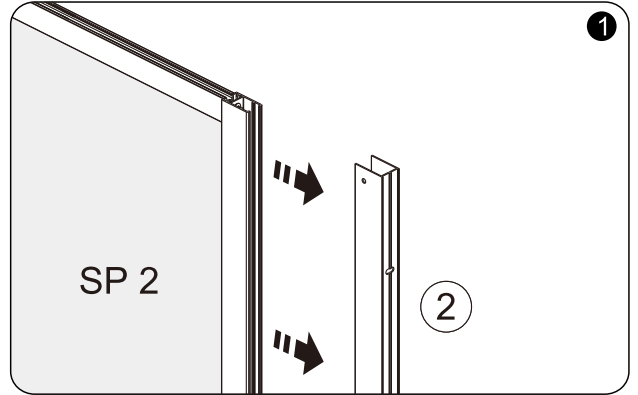
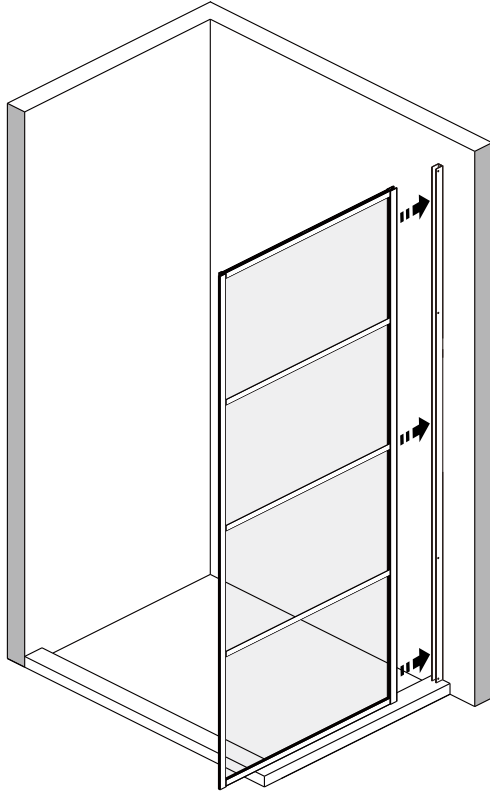
A=B-1



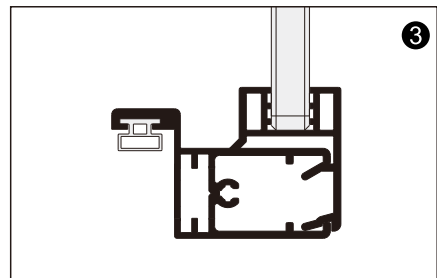
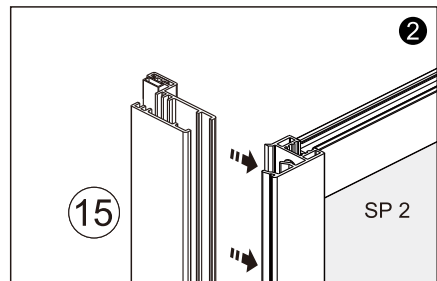
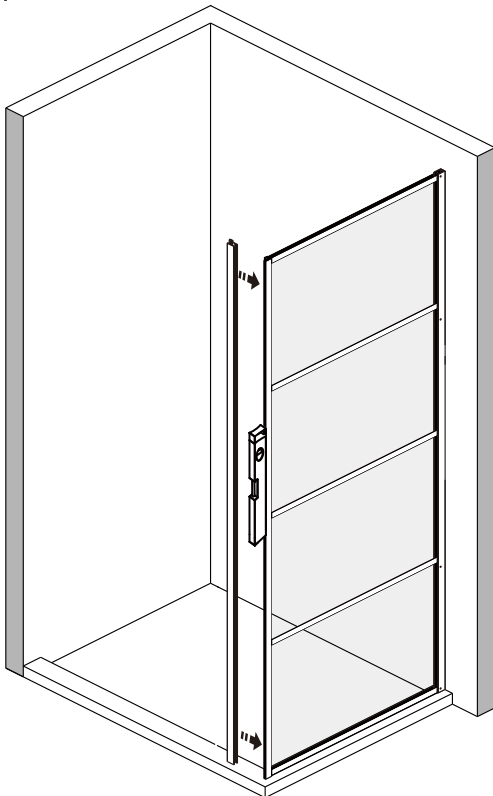
**B** 02



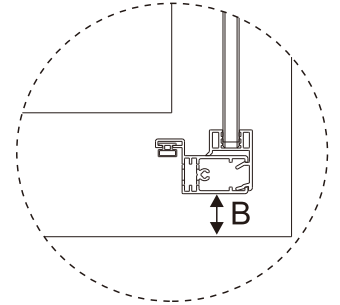
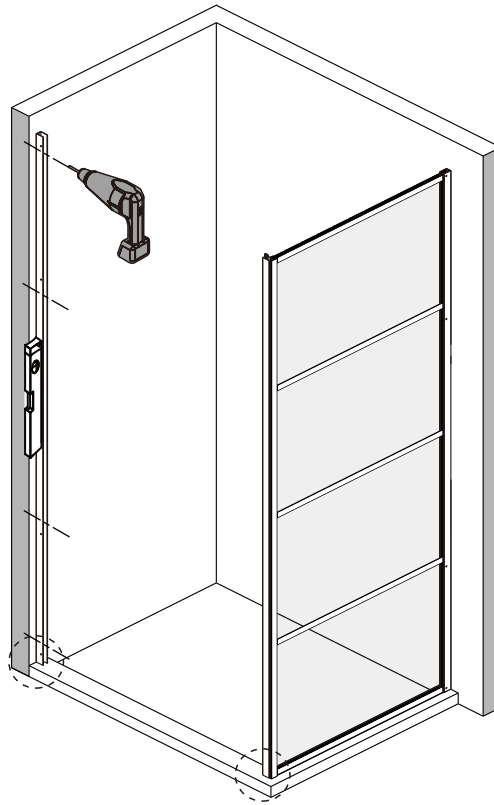
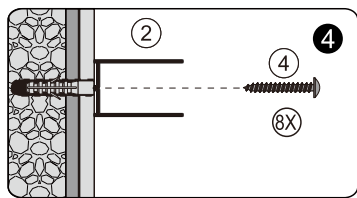
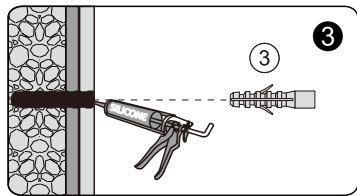
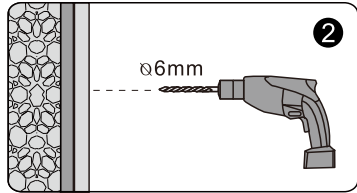
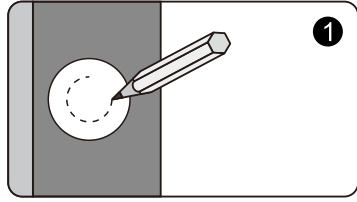
**B** 03



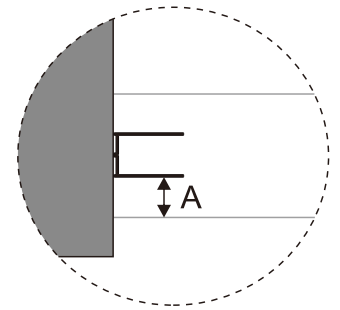
**B** 04



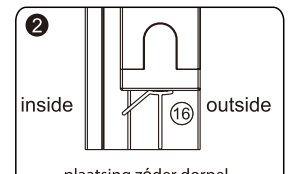
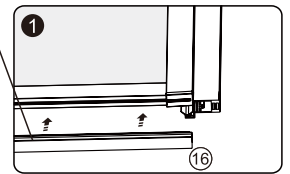
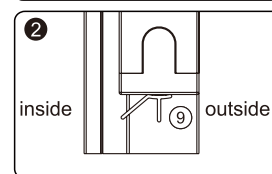
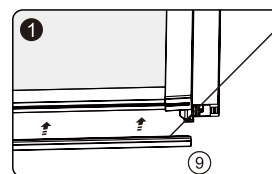
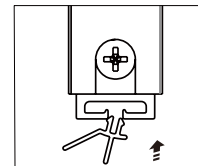
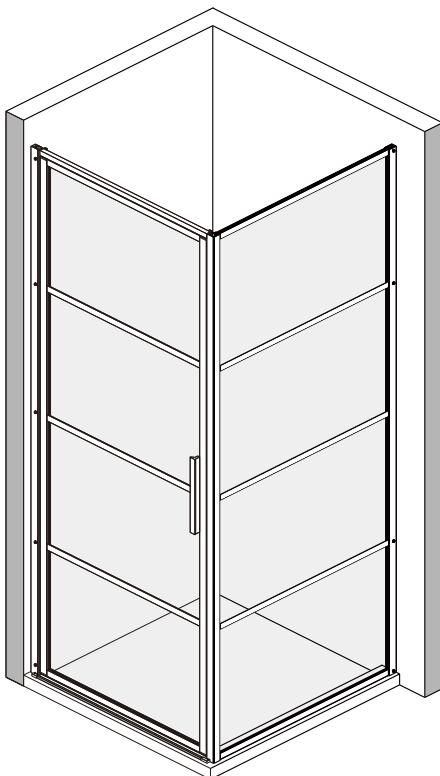
**B** 05



$A = B - 1$

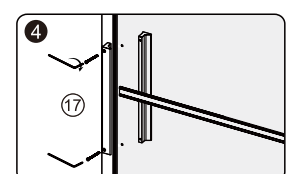
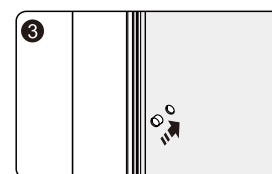


**B** 06

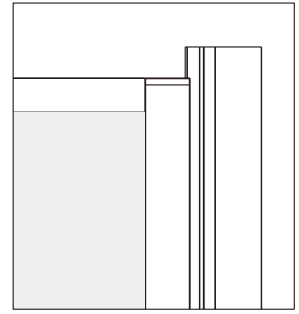
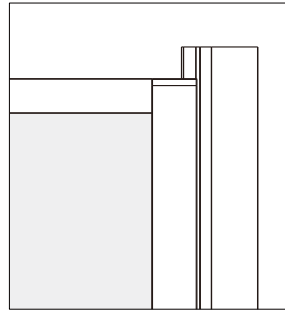
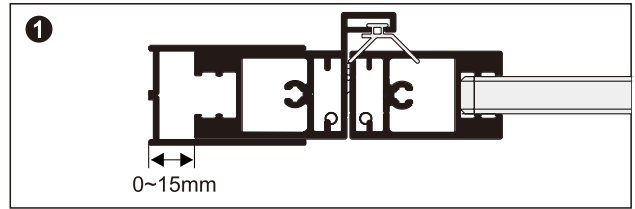
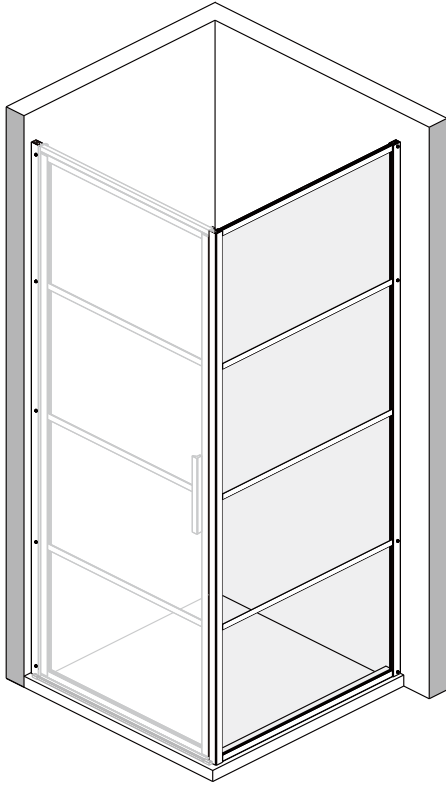


of  
ou  
or

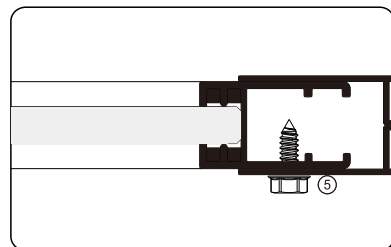
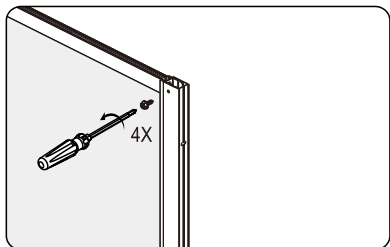
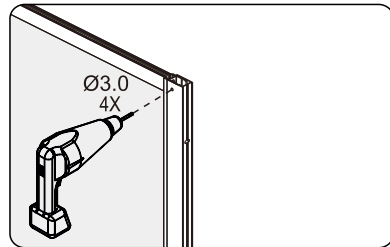
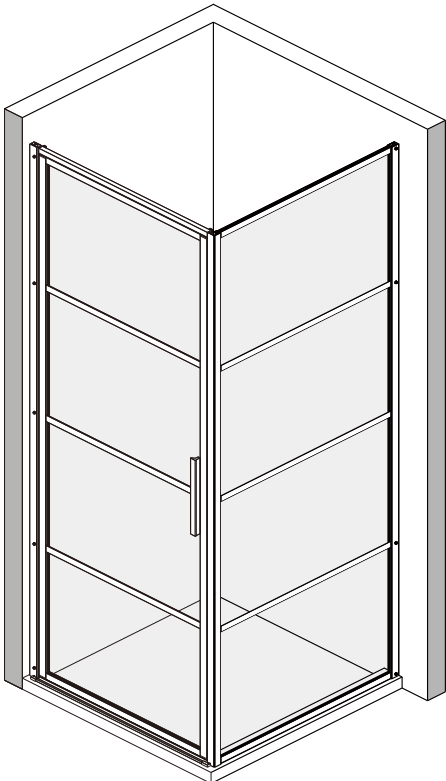
plaatsing zóder dorpel  
placement sans seuil  
mounting without threshold



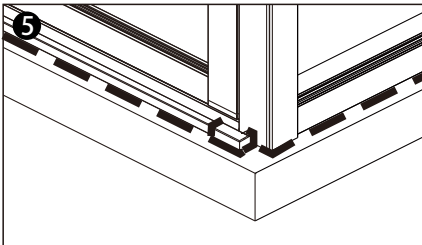
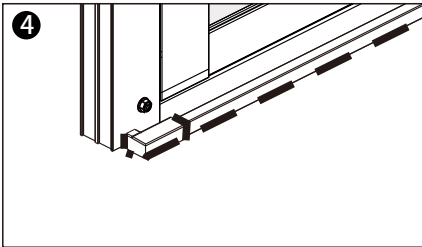
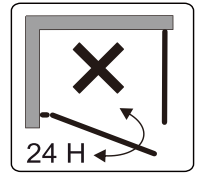
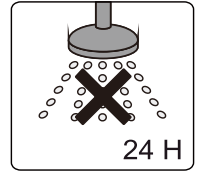
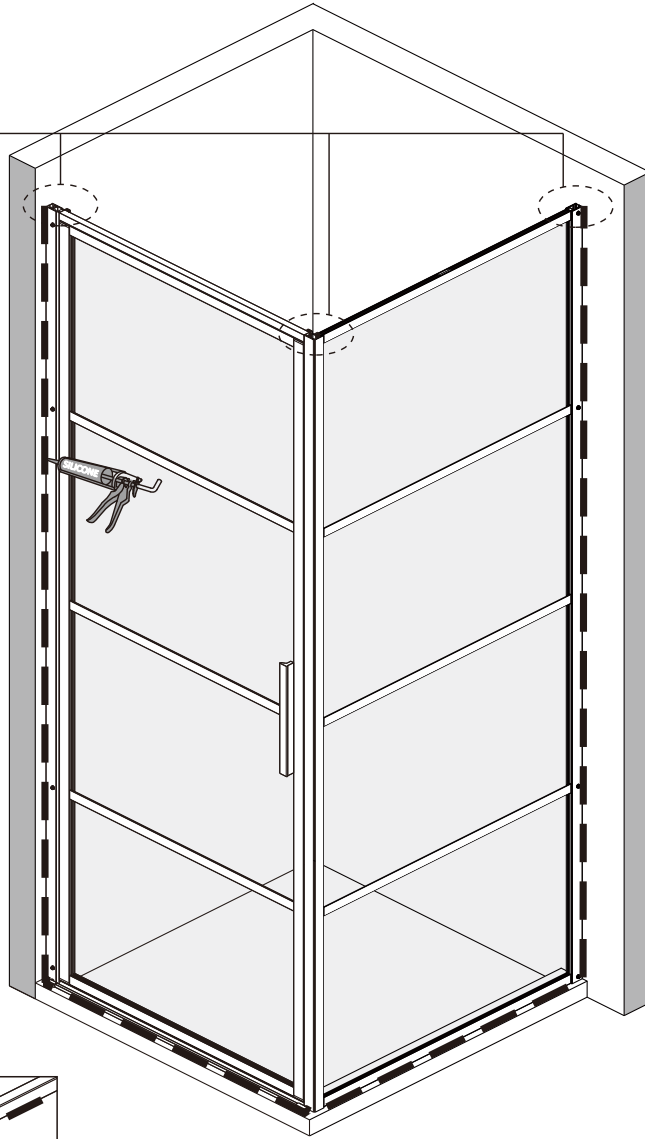
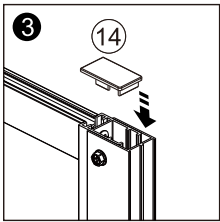
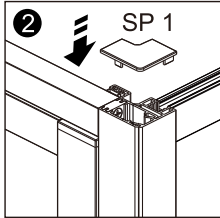
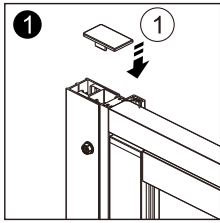
**B** 07



**B** 08



**B** 09



**NL Voor de reiniging dient u een PH neutraal reinigingsmiddel of de aanbevolen Sealskin douchereiniger te gebruiken. Geen verdunner, alkalische, zuur, chloor of schurende middelen gebruiken.**

**GB For cleaning use a pH-neutral cleaning agent or the special cleaner recommended by us. Not to use are solvents, as well as alkaline, solvent -, acid- and chloric or scrubbing agents.**

**FR Pour nettoyer veuillez utiliser s'il vous plaît un produit de nettoyage avec PH neutre ou le produit spéciale recommandé par nous. N'utilisez pas des solvants, ainsi qu'alcalins, acides ou produits avec du chlore ou agressif.**

**DE Zur Reinigung benutzen Sie ein PH-neutrales Reinigungsmittel oder den von uns empfohlenen Spezialreiniger. Verwenden Sie keine scheuernden, alkalischen, säure- oder chlorhaltigen Reinigungsmittel sowie Oxidations- und Lösungsmittel.**

**PL Do mycia i pielęgnacji proszę używać środków czyszczących o odczynie PH obojętnym lub polecany przez nas specjalny preparat. Nie należy stosować rozpuszczalników, jak również preparatów alkalicznych, kwaśnych, zawierających chlor lub posiadających w aściwości ściernie.**



# SOHO

KB19  
KB20  
KB01

Garantiebewijs  
Warranty card  
Garantieschein  
Carte de garantie  
Certificato di garanzia  
Certificado de garantía

This Sealskin product has a warranty period of 5 years. Normal wear and tear on components such as gaskets are excluded from this warranty.

Wholesale dealer: .....

Address: .....

Phone: .....

Fax: .....

Installer: .....

Address: .....

Phone: .....

Fax: .....

**NL** De producent houdt zich het recht voor, ten alle tijde zonder tegenbericht, veranderingen door te voeren.  
**GB** The producer reserves the right to modify the product at any time without prior notice.  
**DE** Der Produzent behält sich jederzeit das Recht, ohne Vorbescheid Abänderungen vorzunehmen.  
**FR** Le producteur se réserve le droit de modifier le produit sans aucun préavis.  
**SV** Tillverkaren förbehåller sig all rätt att produktförändra  
**PL** Producent rezerwuje sobie prawo modyfikacji produktu bez wcześniejszego powiadomienia.

**sealskin** 